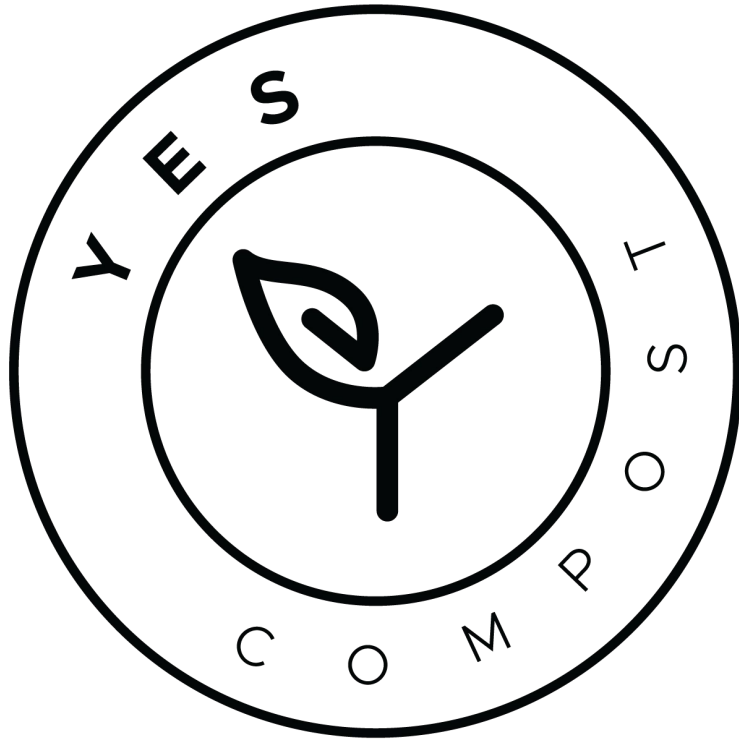


Packaging: Alternatives to Petroleum-based Plastics

Heidi Drivdahl-Noyes, EcoMontana

Karl Johnson, YES Compost

Heather Babineau-z, Whole and Nourished



COMPOSTABLE PLASTICS:

A COMPOSTER'S PERSPECTIVE

DO THEY BREAK DOWN???



YES . . . BUT . . . THERE ARE SOME CONSIDERATIONS TO MAKE

PROS:

- INCREASE COMPOST COLLECTION/PARTICIPATION – HOME BIN LINER BAGS, DIRTY TO-GO CONTAINERS
- “NEW CARBON” – MADE FROM INDUSTRIAL WASTES
- REASONABLE DECOMPOSITION TIMELINE – 180 DAYS
- NO MICRO-PLASTICS*

CONS:

- INCREASE CONTAMINATION – PLASTIC CUPS, “GREENWASHING”
- PFAS
- SINGLE-USE ITEM, “THROW AWAY CULTURE”
- MANY STILL END UP IN THE LANDFILL
- NEED COMMERCIAL/INDUSTRIAL FACILITY TO BREAK DOWN
- NEED TO GO ALL-THE-WAY . . . AND BACK AGAIN!
- HEAVIER CARBON FOOTPRINT . . . FOR NOW.

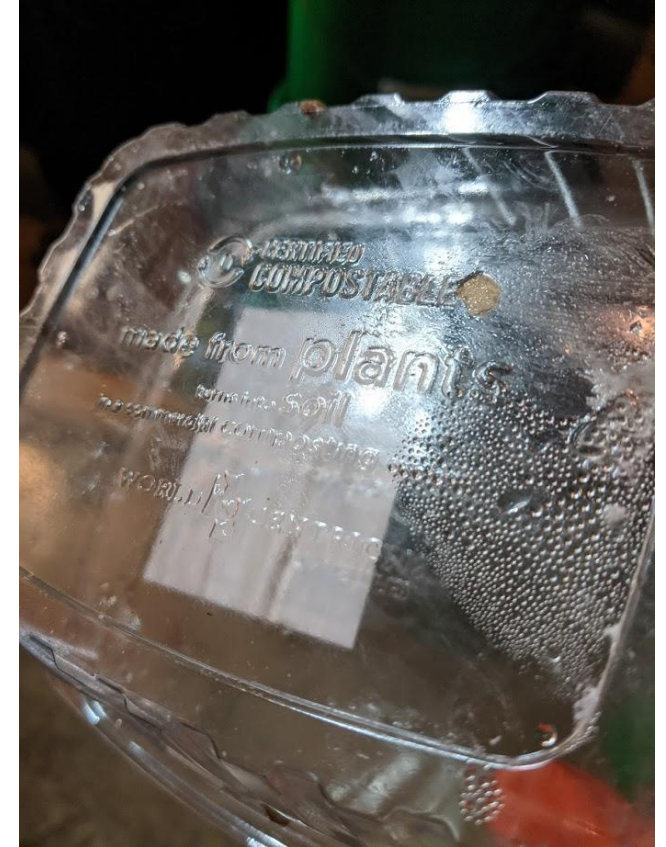
GREENWASHING



GUILTY UNTIL PROVEN INNOCENT

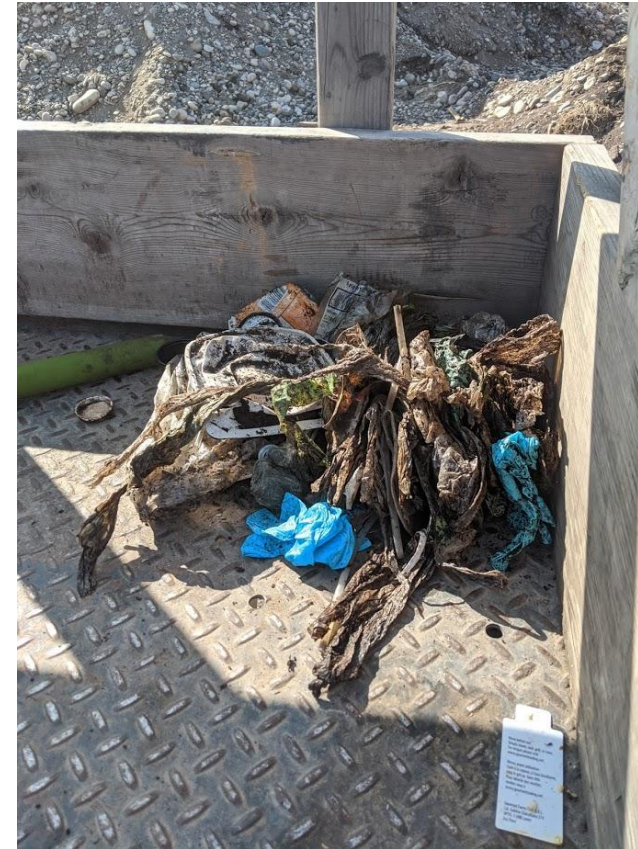
WHAT TO LOOK FOR:

- “CERTIFIED COMPOSTABLE IN INDUSTRIAL OR COMMERCIAL FACILITY”
- BPI – BIODEGRADABLE PRODUCTS INSTITUTE
- ASTM D6400
- #7 PLA, cPLA
- #0



CALL HEIDI OR KARL!!!

CONTAMINATION: *A CALL FOR EDUCATION*



20-30 GALLONS / WEEK

YOU MUST GO *ALL... THE... WAY!!!!*



AND BACK AGAIN... TO MAKE SURE IT ACTUALLY GETS COMPOSTED!

HOW TO MAKE SURE IT GETS COMPOSTED???

- ENCOURAGE CUSTOMERS TO COMPOST AT HOME
- OFFER “TAKE BACK” COLLECTION OF COMPOSTABLE ITEMS



IF SINGLE USE IS REQUIRED, SHOULD WE GO FOR IT???

IF SINGLE USE IS REQUIRED, SHOULD WE GO FOR IT???

YES!!

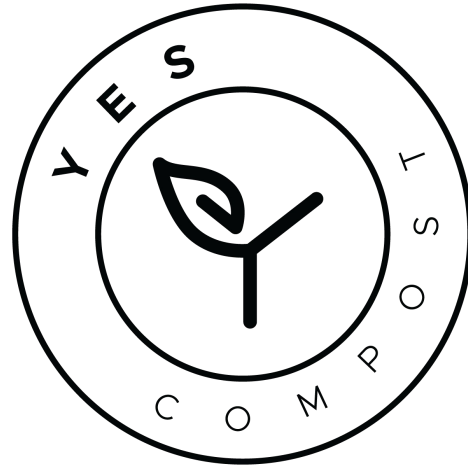
IF SINGLE USE IS REQUIRED, SHOULD WE GO FOR IT???

YES!!

“BE THE CHANGE YOU WANT TO SEE IN THE WORLD”

-Mahatma Gandhi

THANKS!



Karl: 406-219-7011

YESCOMPOST.COM

INSTAGRAM - @YESCOMPOST

Thank you!



WESTERN
EXTENSION
RISK
MANAGEMENT
EDUCATION

